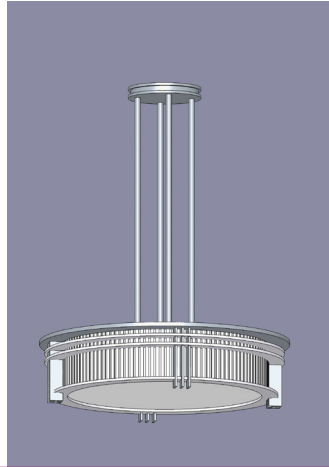


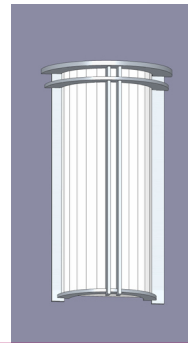
# Jona Family



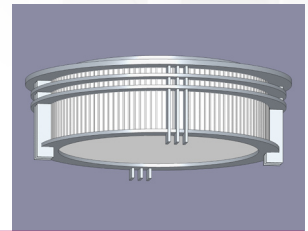
• PES 8201 •



• PES 8901 •



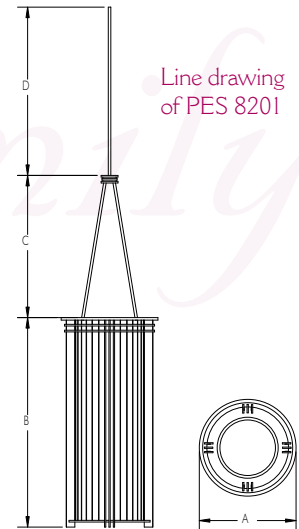
• WES 8301 •



• CES 8201 •

# Jona Family

THE FIXTURES IN THIS FAMILY ARE CONSTRUCTED OF NICKEL PLATED ALUMINUM. THE STANDARD LENSES ARE CLEAR RIBBED GLASS.



PENDANT:	CAT. NUMBER	WIDTH A	HEIGHT B	CROWN C	HANGING D	LAMP CODE	LAMPING OPTIONS
	PES 8201	14.5"	31.0"	21.0"	Specify	NA	6-75W A-19
						FA	4-40W compact fluorescent
	PES 8202	18.0"	39.0"	26.5"	Specify	NA	9-100W A-19
						FA	4-50W compact fluorescent
	PES 8901	28.0"	7.0"	-	Specify	NA	4-75W A-19
						FA	4-26W compact fluorescent
	PES 8902	38.0"	9.5"	-	Specify	NA	4-100W A-19
						FA	4-32W compact fluorescent

CEILING:	CAT. NUMBER	DIAMETER	HEIGHT	LAMP CODE	LAMPING OPTIONS	
	CES 8201	16.0"	5.5"	-	NA	2-40W A-19
					FA	2-26W compact fluorescent
	CES 8202	20.0"	7.0"	-	NA	2-60W T-10
					FA	2-32W compact fluorescent

WALL:	CAT. NUMBER	WIDTH	HEIGHT	EXTENSION	LAMP CODE	LAMPING OPTIONS
	WES 8301	10.5"	19.0"	5.5"	NA	2-60W T-10
					FA	1-18W compact fluorescent

A VARIETY OF CUSTOM METALS, FINISHES, LENS MATERIALS AND LAMPING OPTIONS ARE AVAILABLE UPON REQUEST.