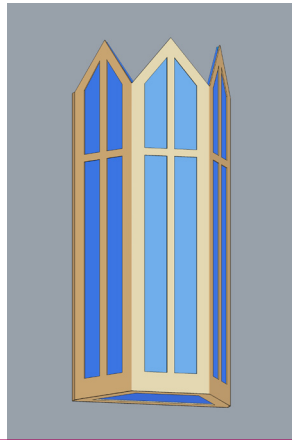
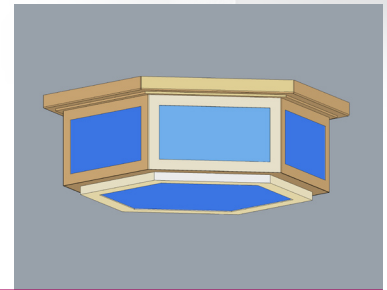




• PES 3503 •



• WES 3503 •

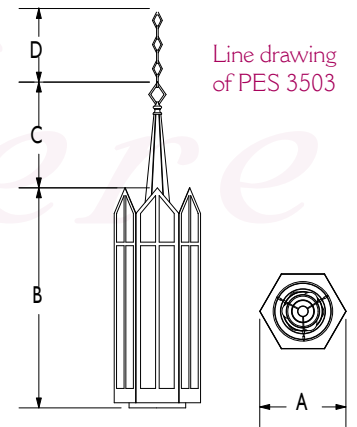


• CES 3503 •

Highclere Family

Highclere

THE FIXTURES IN THIS FAMILY ARE CONSTRUCTED OF HEAVY GAUGE STEEL AND CAN BE FINISHED IN ANY STANDARD PAINT COLOR. THE STANDARD LENSES ARE LIGHT BLUE, WHITE OR IVORY ACRYLIC PANELS.



PENDANT:	CAT. NUMBER	DIAMETER A	HEIGHT B	CROWN C	HANGING D	LAMP CODE	LAMPING OPTIONS
	PES 3503	13.0"	33.5"	15.5"	Specify	NA ND FA FD	6-100W A-19 6-100W A-19 + 1-300W R40 down 4- 40W compact fluorescent 4- 40W compact fluorescent + 1-300W R40 down
	PES 3504	16.0"	41.0"	19.0"	Specify	NA ND FA FD	9-100W A-19 9-100W A-19 + 1-500W R40 down 6-40W compact fluorescent 6-40W compact fluorescent + 1-500W R40 down
CEILING:	CAT. NUMBER	DIAMETER	HEIGHT			LAMP CODE	LAMPING OPTIONS
	CES 3503	18.5"	6.0"		-	NA FA	2-40W A-19 2-26W compact fluorescent
	CES 3504	24.0"	8.0"		-	NA FA	2-60W A-19 2-32W compact fluorescent
WALL:	CAT. NUMBER	WIDTH	HEIGHT	EXTENSION		LAMP CODE	LAMPING OPTIONS
	WES 3503	7.5"	18.0"	4.0"		NA FA	2-40W A-19 2-13W compact fluorescent
	WES 3504	10.0"	22.0"	5.0"		NA FA	2-60W A-19 2-18W compact fluorescent

A VARIETY OF CUSTOM METALS, FINISHES, LENS MATERIALS AND LAMPING OPTIONS ARE AVAILABLE UPON REQUEST.